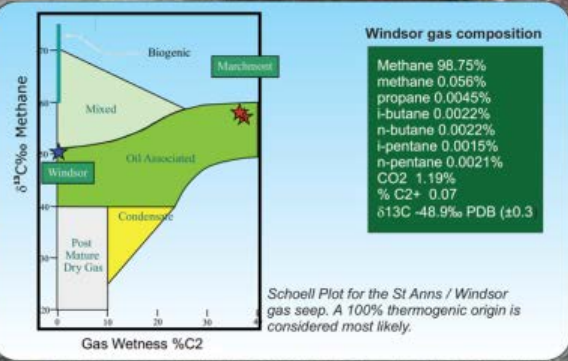
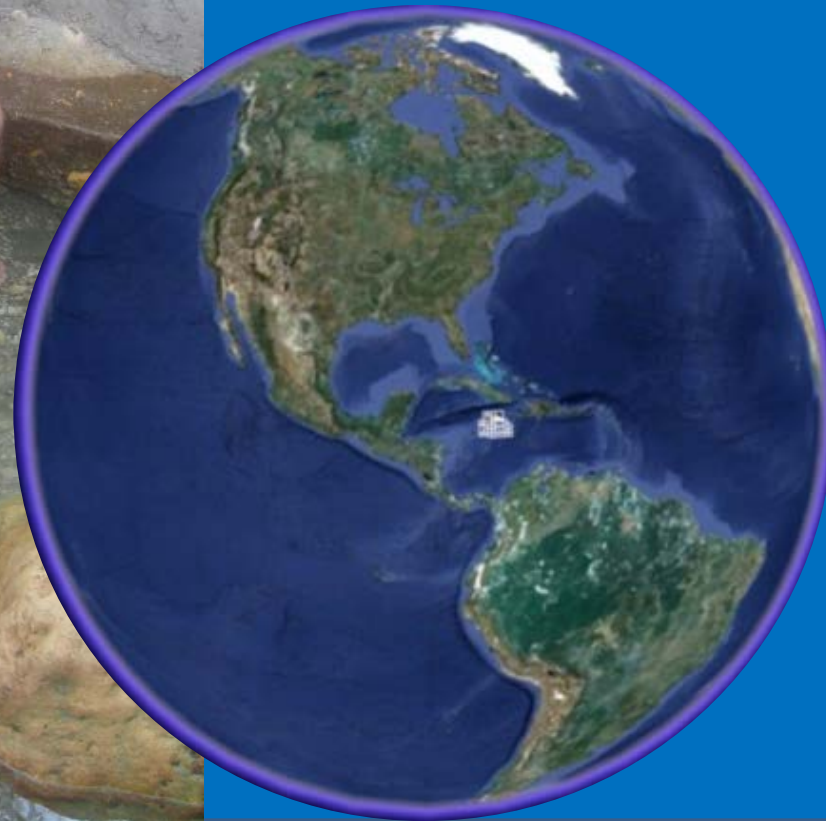




PETROLEUM CORPORATION OF JAMAICA

JAMAICA: EXPLORATION OPPORTUNITIES

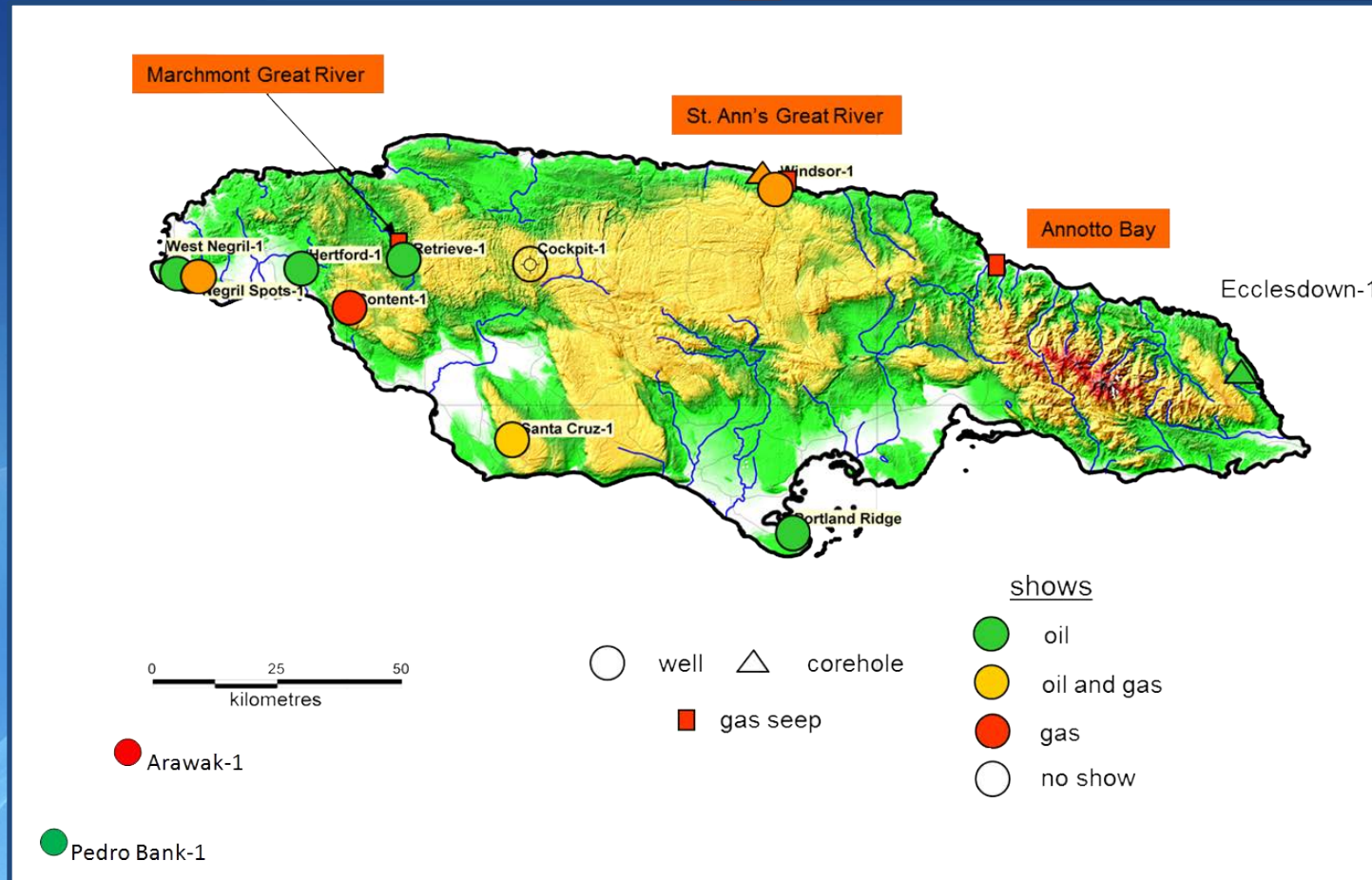
Our OIL & GAS POTENTIAL





Case for an Oil & Gas Petroleum System

- 10 of 11 wells Oil & Gas shows
- Rich Tertiary & Cretaceous Source Rocks proven at outcrop and in boreholes
- Reservoirs proven at outcrop and in boreholes
- Seals proven at outcrop and in boreholes
- Active gas seep at Windsor for over 100yrs





Oil Case: Source Rock

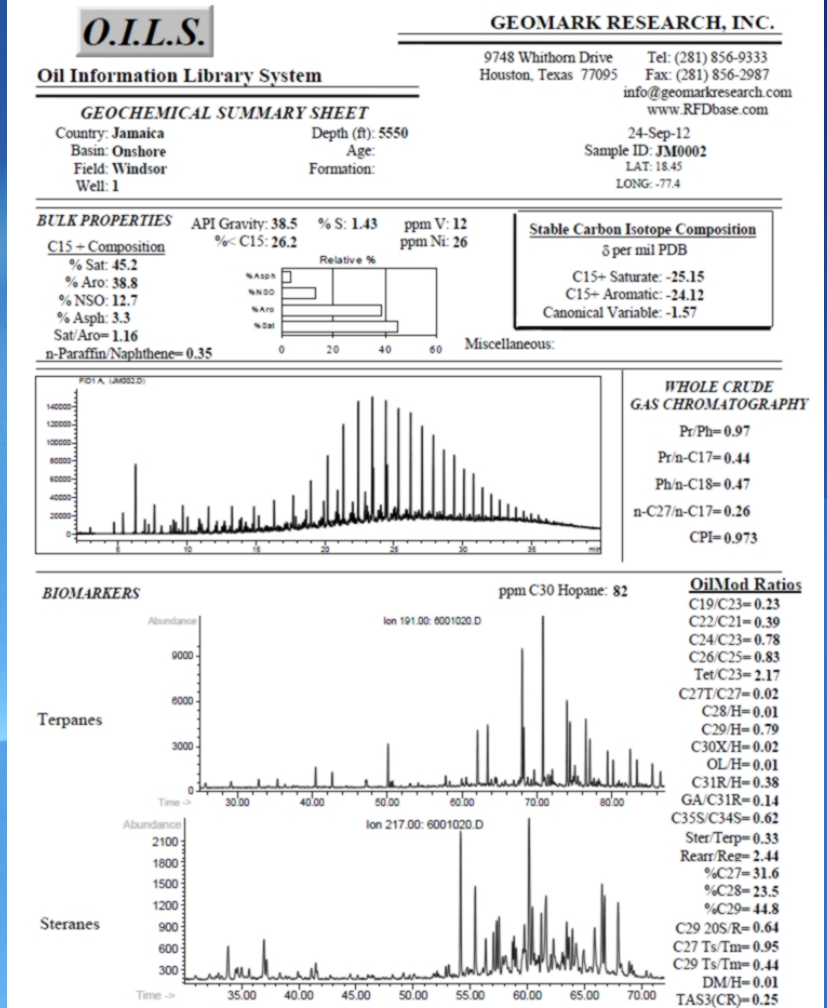
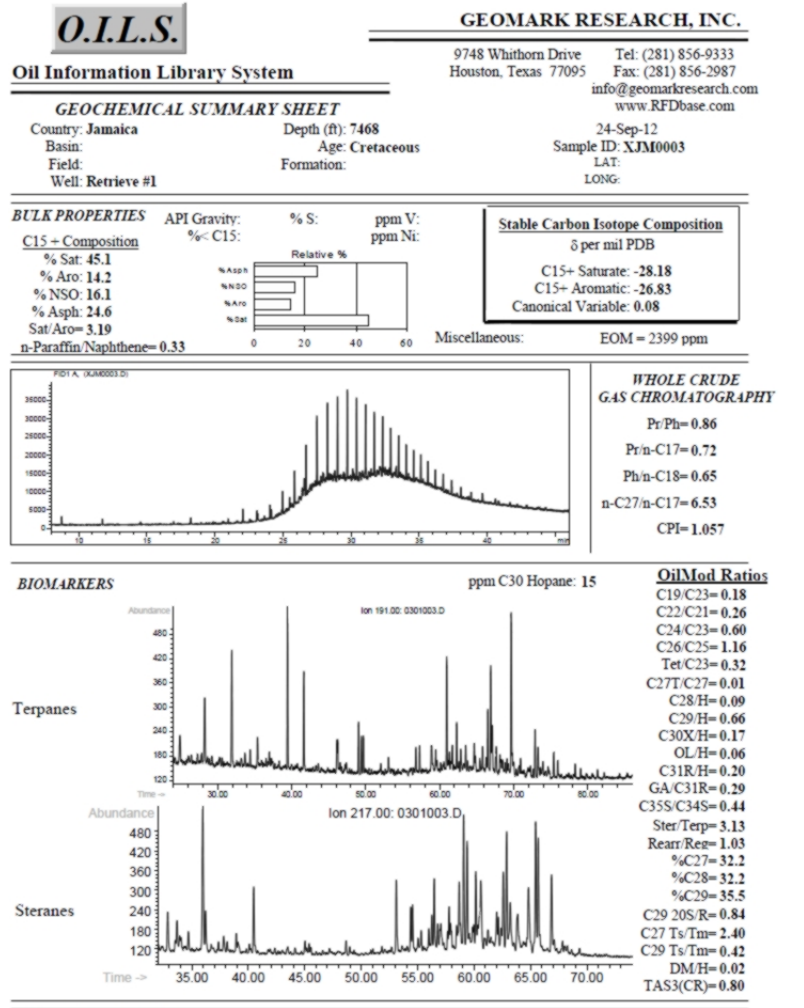
AGE	Well Details/Sample Location				TOC (%)	Maturation			OM Type	Comments
	Outcrop sample	Well	Depth (ft)	Lithology		VR (%)	T _{MAX} (°C)	TAI		
JURASSIC ??				Marine clastics ??					Inferred from oil geochemistry	
ALBIAN	-	Windsor 1	4700 to 6400	-	0.69 - 1.09	0.59 - 0.7	438 - 466	2- to 3-	Humic: cuticle & woody. Cuticle considered paraffinic oil prone OM	Fair potential of paraffinic oil and gas
	-	Retrieve 1	7400 to 7600	Shale beds in lst	0.5 - 1.78	-	-	2 to 3+	Humic: predominantly woody /w some cuticles	Fair potential of gas
ALBIAN-CENOMANIAN	-	Windsor 1	2950 to 4300	Thin shale beds	0.73 - 2.41	0.75	-	2- to 3	Humic: predominantly woody OM	Good potential for gas and possibly oil
MAASTRICHTIAN	-	Jerusalem Mountain Corehole	52 to 123	Shales	0.13 - 4.04		445 - 449	2- to 2	Humic predominantly	Fair to good potential for gas but considered limited due to thin shale units at location sampled
	-	Cockpit 1	3002 to 3554		0.27 - 1.43	0.78 - 0.93		2+	Humic with minor mixed	Fair potential for gas generation
MIDDLE EOCENE	-	Content 1	3573 to 5977	Marls and shales of the Chapleton Fm	0.38 - 15.32	0.36	432 - 435	1+ to 2-	Two suites: One predominantly liptinic (alginite) and the other humic	Excellent potential for oil and gas if buried deep enough to be mature.
	-	Chapleton FM	-	-	1.22 - 23.11	0.3 - 0.51	<430	1+ to 2+	Three suites: One predominantly alginite, second predominantly woody and third mixed	Good potential for oil and gas generation where buried deep enough to be mature.
	-	Cornwall Corehole	1013 to 1395	limestone	0.25 to 2.72		427 - 444	2 to 3	Humic and mixed humic/liptinic	Fair potential for gas generation
-	Ecclesdown Corehole	1450	shales/mudstones	1.16 - 3.6		398 - 432	2- to 2+	Humic and mixed humic/liptinic	Good potential for gas and possibly oil if buried to sufficient depth	



Oil Case: GC profiles

CRETACEOUS Oil from Retrieve 1 @ 7,468 ft

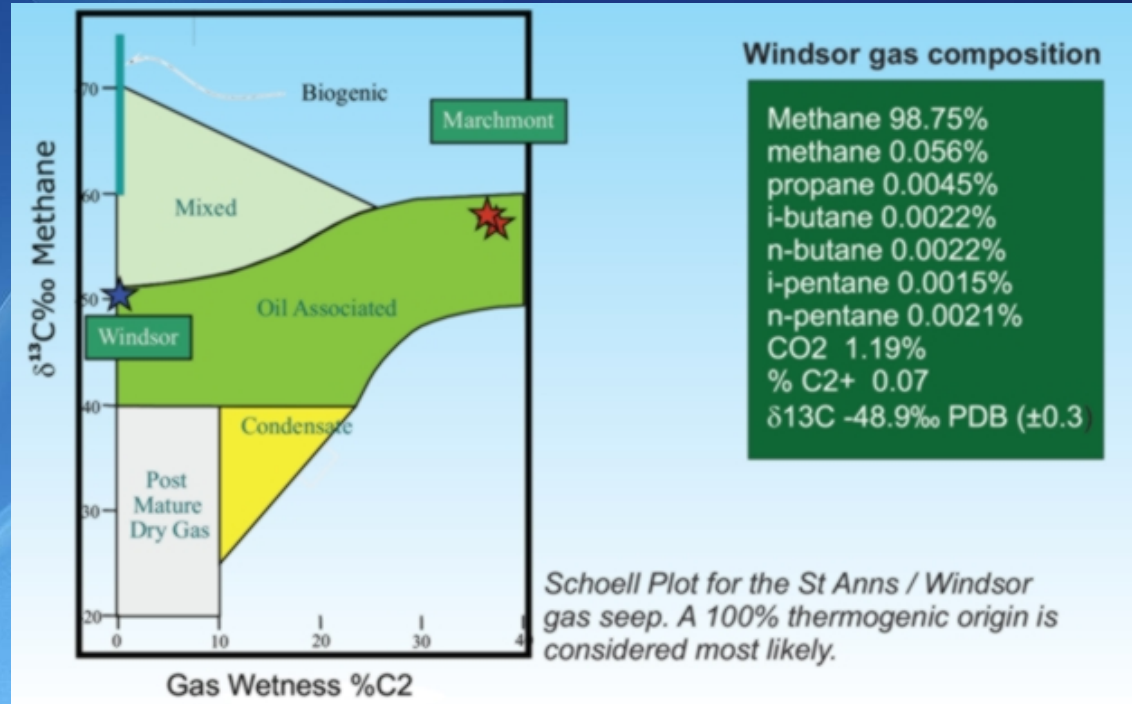
JURASSIC Oil from Windsor 1 @ 5,550ft





Gas Case: Thermogenic Origin

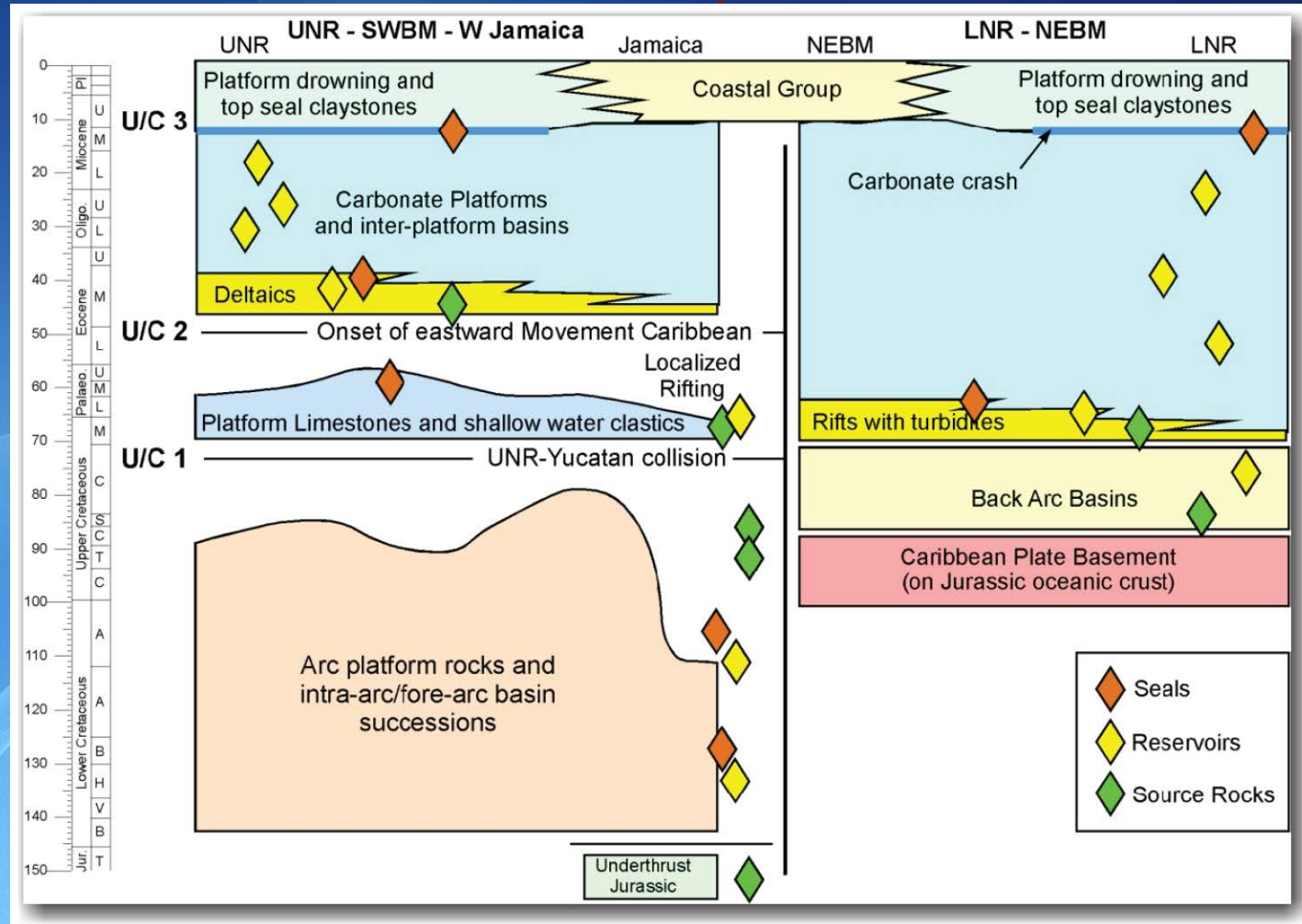
- Work by JEBCO (2004) shows 100% likely thermogenic origin for gas seeps





Petroleum System: Reservoir & Seal Pairs

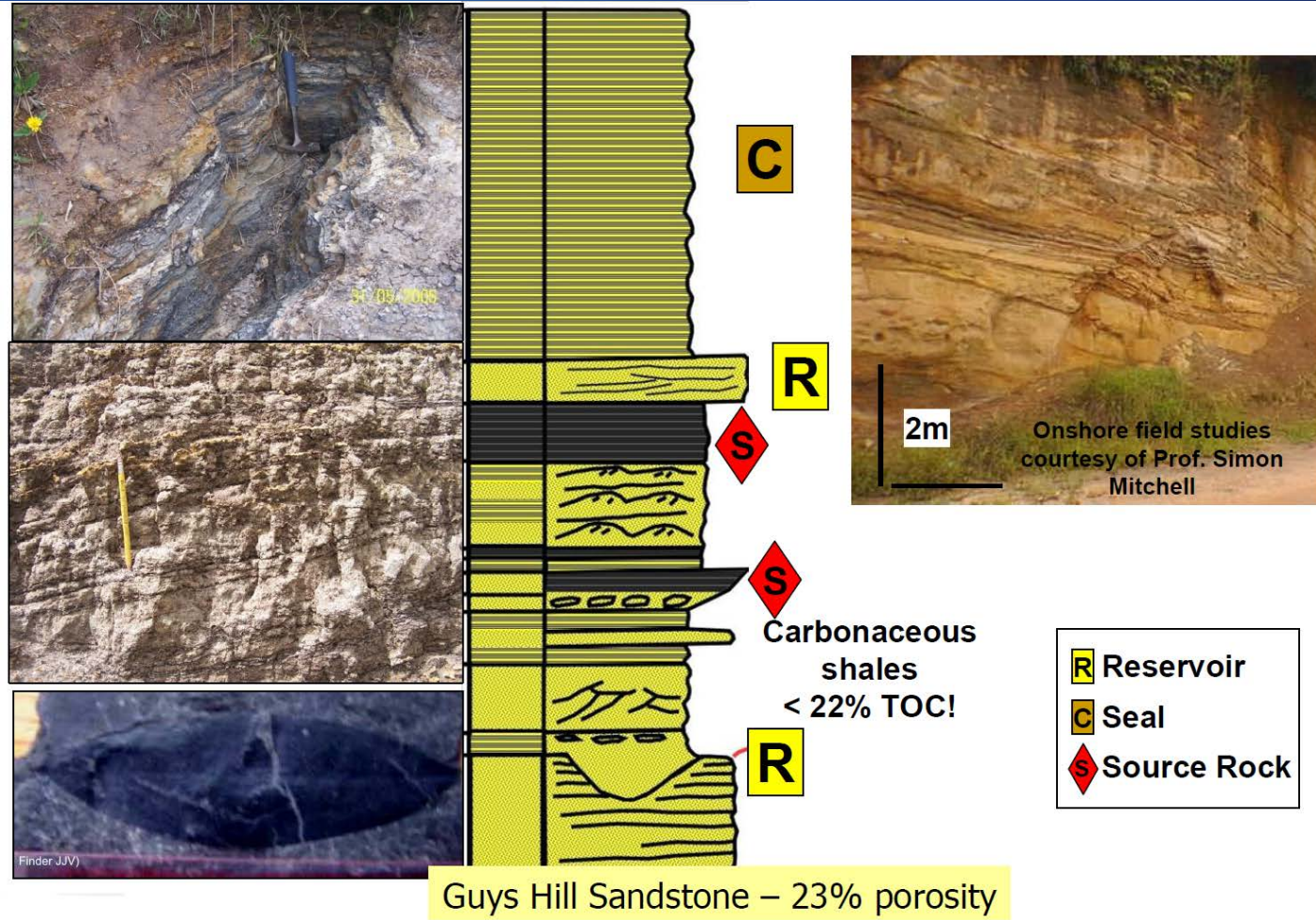
- Reservoirs:
 - Eocene reefs & fluvio-deltaics & Maastrichian clastics
- Seals:
 - Eocene claystones & Cret. Shales/marls





Reservoirs & Seal Pairs at Outcrop

- Mid Eocene fluvio-deltaics: Guys Hill sandstone ($\phi = 23\%$)



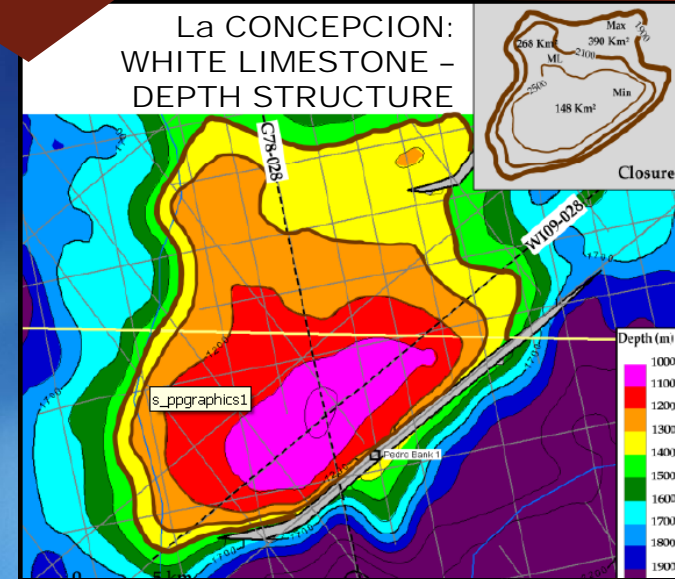


PROSPECTS/LEADS: Pedro Bank, Shallow Water

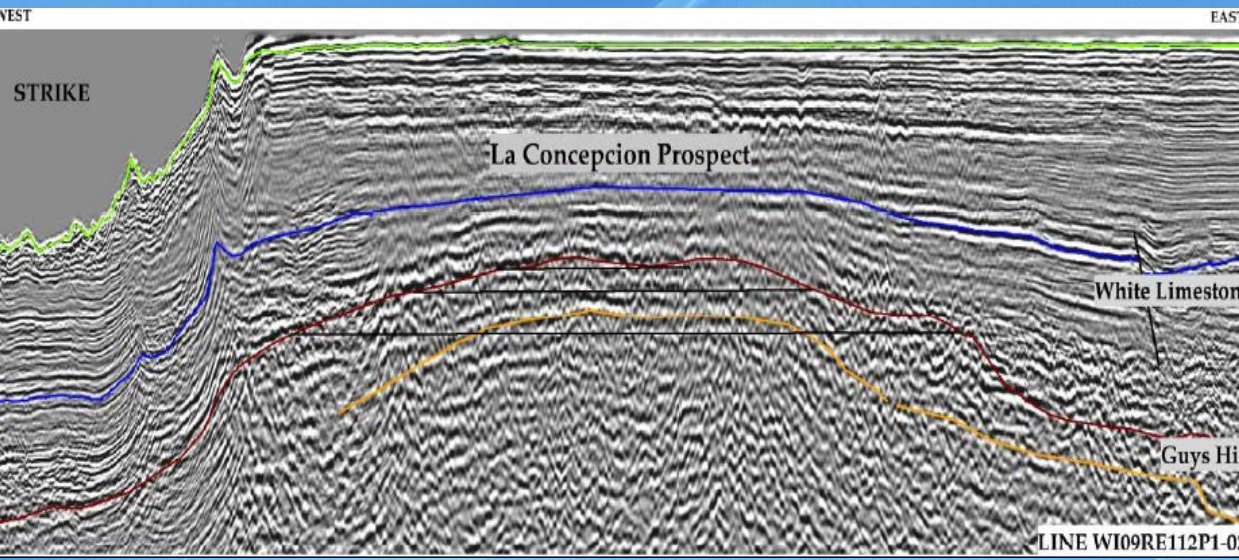
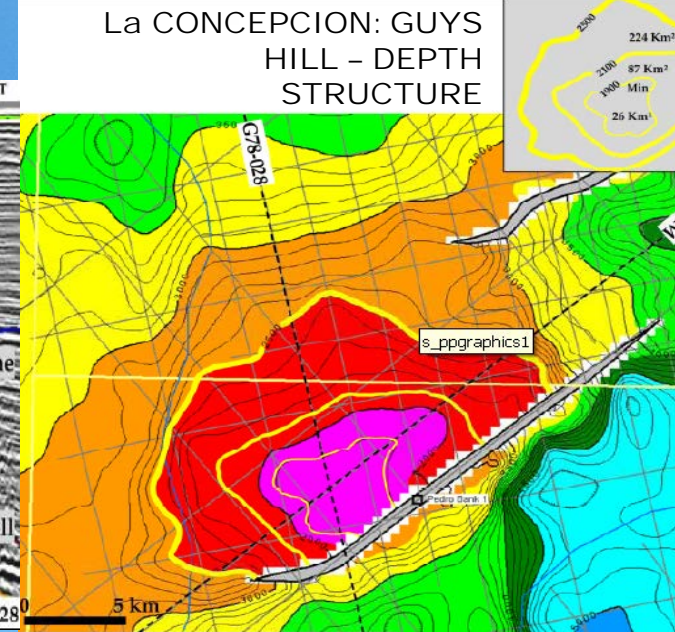
- Large Structures: 10-390 sq km
- Two prospects & three leads
- Shallow water drilling (10-30m)
- Recoverable resource potential: $P_{50} \sim 2.2$ Bboe
(Chapman NI 51-101 Resource Evaluation, Aug 2010)

PRELIMINARY ASSESSMENT

Recoverable Resource (MMBOE)	P_{90}	P_{50}	P_{10}
White/Yellow Limestone	975	2104	3531
Guy's Hill Sandstone	118	338	623

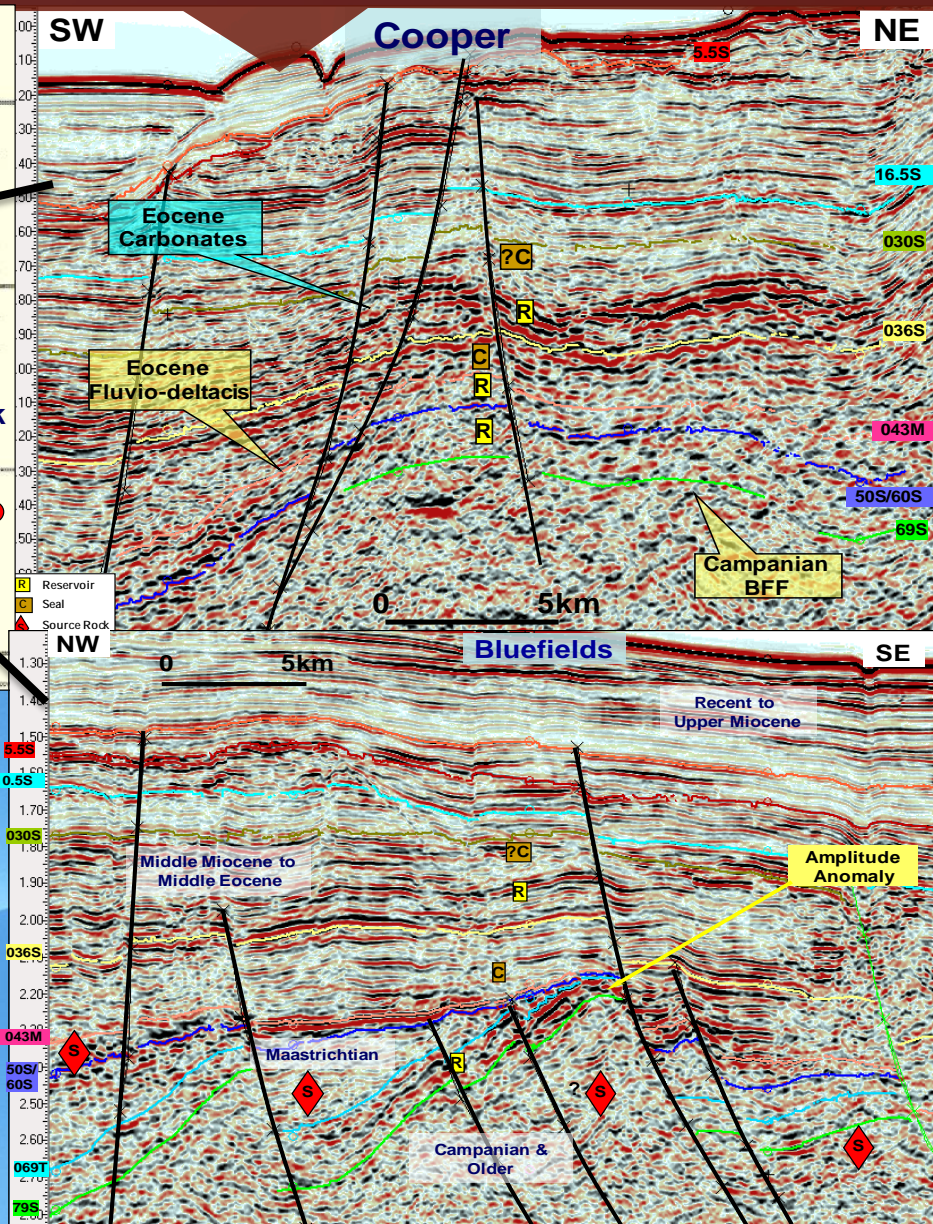
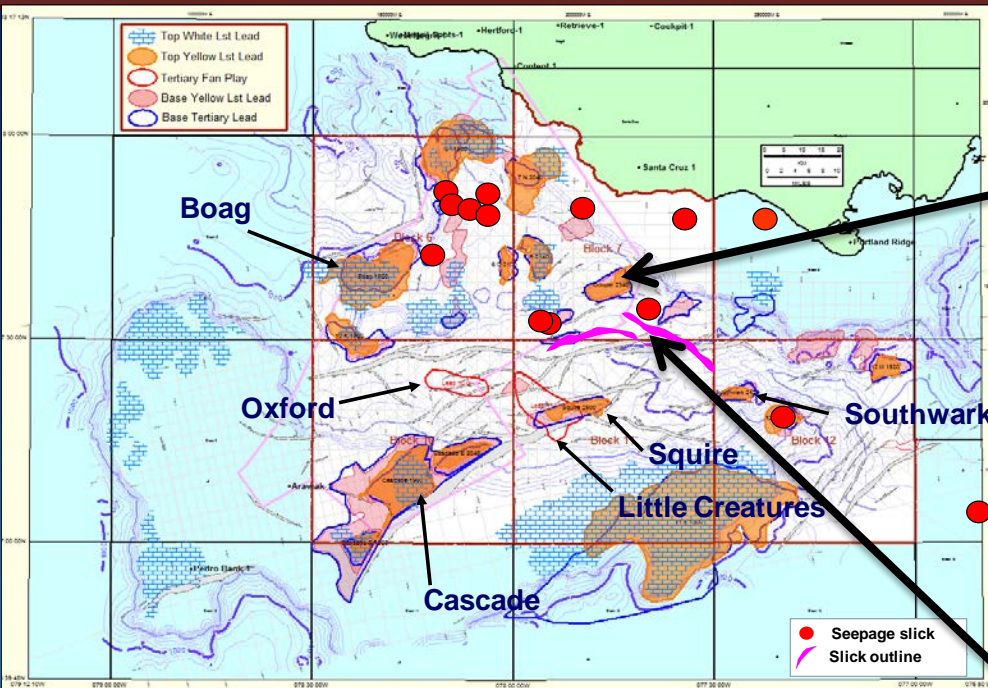


La CONCEPCION: GUYS HILL - DEPTH STRUCTURE





PROSPECTS/LEADS: Walton Basin, Deep Water



COOPER PROSPECT (>650m water depth)

- 2,450m depth to primary target, both carbonates and clastics
- Deterministic Rec. Resource: 352 mmbbls

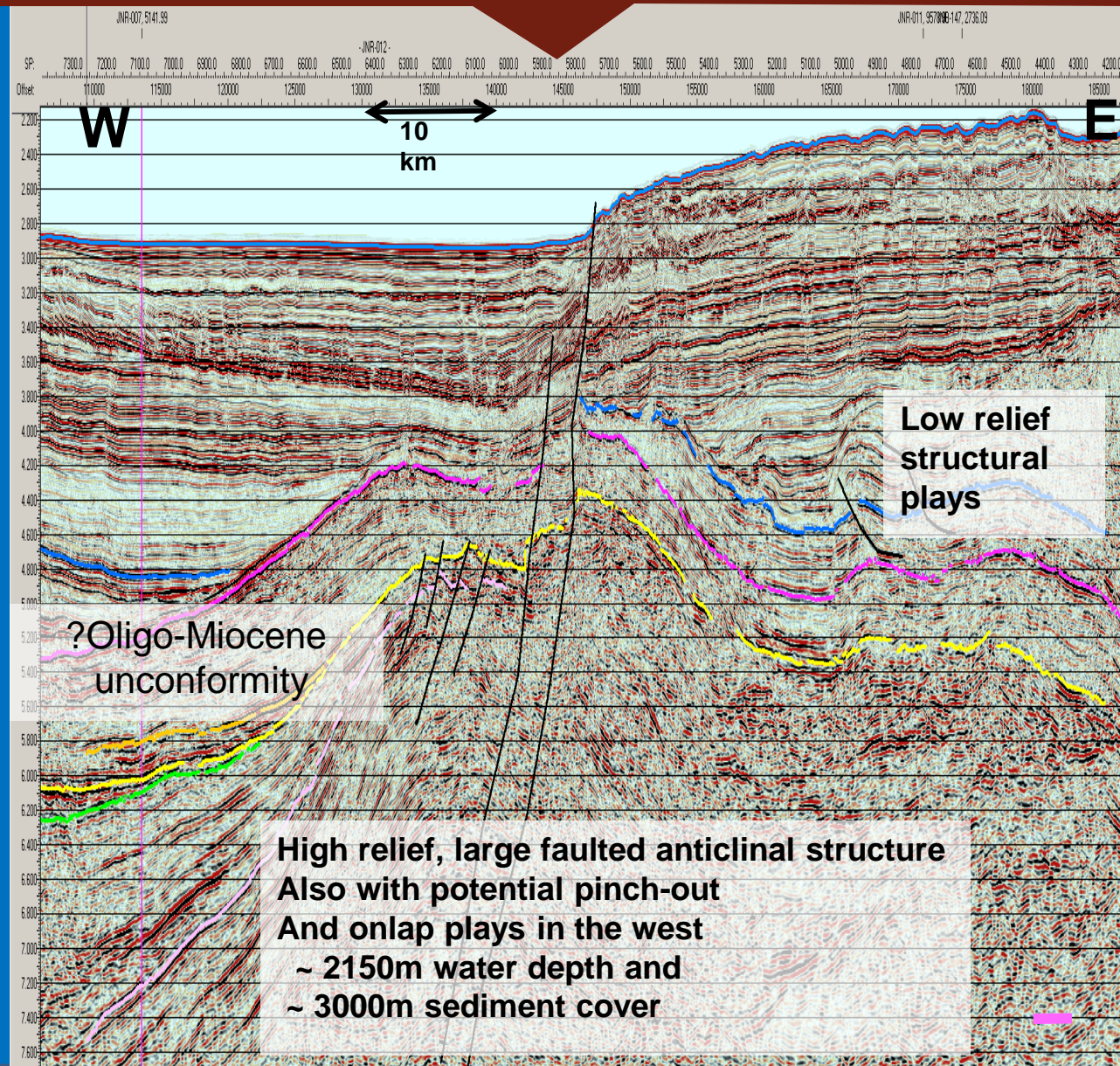
BLUEFIELDS PROSPECT (>500m water depth)

- 2,200m depth to primary target - clastics
- Deterministic Rec. Resource: 200 mmbbls



PROSPECTS: Ultra Deepwater, SE Jamaica

- Nine dip/fault closed leads identified as well as reef and amplitude plays
- Structural closures range from 80 to 600 sq. km
- Potential to contain billions of barrels in place.
- Leads offer good top seal potential





CONCLUSION Jamaica

- 127,000 sq km on and offshore; only 11 wells – **UNDER-EXPLORED**
- 10 of 11 wells with oil and gas shows; all drilled off-structure
- 3 types of oils fingerprinted
- New seismic shows large sedimentary basins
- 2.7 Bboe – shallow water
- 1.17 mmbbls – deep water
- Multi-billion potential ultra deepwater
- **ALL UNTESTED!!**



THANK YOU !
PLEASE PASS BY BOOTH 726
ASK FOR BRIAN

JAMAICA: EXPLORATION OPPORTUNITIES
Our OIL & GAS POTENTIAL



PETROLEUM CORPORATION OF JAMAICA